

Lincoln, Newark & Gainsborough College

OPTIONS

Choices at 14



Welcome!

We offer a wide variety of work related subjects to meet the needs of 14-16 year old Key Stage 4 pupils at Lincoln, Newark and Gainsborough College. All our courses are available in a supportive and exciting environment.

Coming to college will help you to decide on what you want to progress to when you leave school. You'll meet new people and find out about life in the college environment.

Remember that you can find out more about this programme on our website at: www.lincolncollege.ac.uk

We hope to welcome you soon!

Our courses

Construction
Hair and Beauty
Hospitality and Catering
Motor Vehicle
Skills for Working Life
Business Studies

Lesson style

Your lessons will be both theory and practical based.

Attendance

If you are offered a place on a college based programme you will attend for two half days per week.

Progression

Information and advice can be found at www.connexions-direct.com/jobs4u





What is IFP?

The Increased Flexibility Programme involves collaborative working between local secondary schools in the areas surrounding Lincoln, Gainsborough and Newark.

The aim of the programme is to create enhanced vocational and work related opportunities for local 14-16 year olds who will benefit most through the provision of appropriate NVQs and vocational GCSEs. Our 14-16 provision is in line with national requirements. In particular it raises attainment in national qualifications, increases skills and knowledge in work related training and contributes to the improved social learning and personal development of participating pupils.

Students attend from the following schools:

LINCOLN

- North Kesteven School
- Yarborough School
- Christ's Hospital School
- St Christopher's School
- Phoenix School
- Sincil School
- St Peter & St Paul School
- Robert Pattinson School

GAINSBOROUGH

- De Aston School
- Castle Hills Community School
- Middlefield School of Technology
- The Beckett School

NEWARK

- The Grove School
- Newark Orchard School
- Newark High School
- The Minster School
- Magnus Church of England School



How to apply

The first step is to discuss your options with a teacher at school or a Connexions advisor. You should then complete the application form on page 19 of this prospectus and return it to your school teacher. When we receive this you will be invited to join us for a taster day followed by an interview.

Learning Resources Centres

'Your Window of Opportunity'

Our wide-ranging study facilities in the friendly and relaxing atmosphere of our Learning Centres at Lincoln, Gainsborough and Newark provide a supportive and stimulating learning environment for your independent learning.

The designs incorporate many of our students' recommendations, ensuring that these Centres are welcoming, well equipped and very accessible to all our student users. We hold fun focus groups to help us exchange news, views and ideas and we also celebrate the splendid achievements of our students by showcasing their work around our Learning Centres.

As a student of the College you will have:

- Free e-mail
- Free access to the Web
- Free loan of mixed media resources
- Photocopying and colour printing at reasonable prices
- Access to the on-line computer catalogue of learning resources at <http://olib.lincolncollege.ac.uk>

We strive for excellence with a range of these quality resources...

- Networked Computers
- Laptops using a wireless network*
- Printers, network scanners and photocopiers* °
- Specialist and subject zones
- Books and directories
- Periodicals and newspapers
- Careers information and software
- Multi-media software
- On-line information on new Virtual Learning Environment
- Electronic resources
- Language resources* °
- TV/DVD/video players*
- Specialist technology
- Specialist information boards including Environmental Issues* and Health & Fitness
- Eye-catching designer display systems* °
- Information display area to improve your learning and study skills* °
- Mobile Toolboxes of accessibility equipment

and these important services...

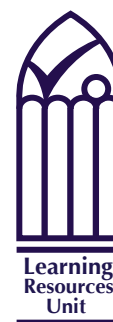
- Friendly and helpful staff
- Clear signage
- Access for disabled users including hearing loops
- DVD/CD-ROM and video/audio loans
- Lending, request and inter-library loans
- Work preparation areas
- Study areas and comfort seating*
- Plasma display screen* °
- User guides, subject bookmarks* & resource lists*
- Newsletters
- Group inductions with Virtual Tour* on the College Intranet
- Information skills sessions
- PC booking facility
- 'friPOD' Audio tour* °

*these are not currently available at Newark Learning Centre

°these are not currently available at Gainsborough Learning Centre

Contact details:

lincolnlrc@lincolncollege.ac.uk or Tel. 01522 876232
newarklrc@lincolncollege.ac.uk or Tel. 01636 680680
gainsboroughlrc@lincolncollege.ac.uk or
Tel. 01427 617471



You say -

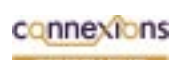
"Staff are very helpful and kind and always there to lend a helping hand"

"I can find everything in here as everything's in a suitable easy place"

"10/10 Brilliant"



Lincoln College Learning Centres are registered with the 'Inspire' campaign which seeks to provide seamless access for learners to library and learning resources throughout England.



Library Certificate of Effectiveness 2006 for achieving the East Midlands Consortium Standard for Connexions libraries.

Where to eat

Blackfriars Restaurant - Lincoln

Blackfriars restaurant boasts a modern dining facility on the first floor of the refurbished Abbey building. Catering for all tastes, the restaurant has two counters – a traditional dining area and a Coffee Shop.

The food in the refectory is cooked fresh daily and the meat is locally sourced. Salt and MSG have been reduced and fresh vegetables come from a local supplier who grows much of his own supplies. Hot meals are available from 8.00 till early evening and special diets and vegetarians are well catered for.

Healthy, tasty eating is made easy with the daily salad bar and lines like muesli bars - a new range of vending machines called "Green Machines" have also been provided across the campus to give healthy alternatives, including low fat crisps, cereal bars and dried fruit.

Blackfriars has seating for 250, including bar stools, sofas and armchairs. Other services available are a dry-cleaning service, cashpoint, stationery, Sky television and newspapers for sale.

SnackSHACK - Gainsborough

The snackSHACK opens each day at 8.30 and caters for all tastes. Seating around 50 people there is a wide range of hot and cold food available, including daily specials. Vending machines are also available at all times serving cold snacks, confectionery and hot and cold drinks.

The snackSHACK is open:

Mondays - Thursdays 8.30 -14.00

Fridays 8.30-13.30

NG24 - Newark

The refurbished College restaurant and café provides a wide selection of drinks, main course meals, snacks, fast food favourites and healthy options, all at competitive prices. Flexible opening hours meet the varied needs of our students.



Facilities

Hair & Beauty Salons

Image Zone - Newark

The hair and beauty salon holds the most up to date equipment and offers clients a range of treatments at very competitive prices. The hair salon offers perming, cutting, blow drying and colouring, whilst the beauty treatments range from facials to manicures. There are also treatments such as sports massage, face and body treatments.

Tel: 01636 680680

TheLOOK - Gainsborough

Our salons offer a modern and well-equipped training environment for courses in hairdressing and beauty therapy with a range of up-to-date facilities and equipment to ensure that students are trained in the most modern techniques. 'TheLook' is open to students and members of the public who would like to take advantage of hair and beauty treatments at subsidised rates.

To make an appointment and find out more about the opening times contact **01427 617471**.

TotalLOOK - Lincoln

Why not pay a visit to the Hair & Beauty Salons at Lincoln College?

The salon is staffed by current students and Lincoln College students are eligible for a 50% discount on most treatments.

The reception is open Monday-Friday 9.30 - 16.00

For more information, please contact:

Lucie Hulme

TotalLOOK | Gibney Building | Monks Road | Lincoln

Tel: 01522 876392

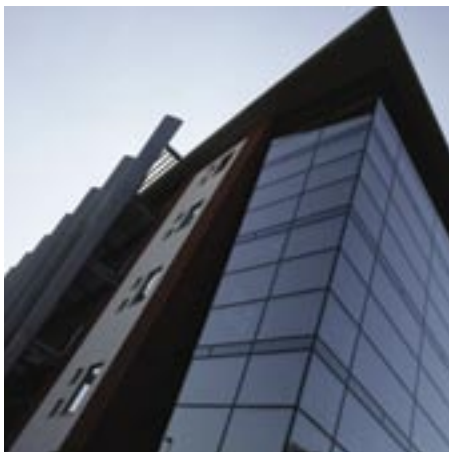
lhulme@lincolncollege.ac.uk



Courses

- pg 8 City & Guilds Level 1 Introductory Certificate in Basic Construction Skills **L N G**
- pg 9 Certificate in Vehicle Maintenance and Repair (4101) **L N G**
- pg 10 Certificate in Hospitality and Catering Skills **L**
- pg 11 Certificate in Skills for Working Life **L N G**
- pg 12 Certificate in Salon Services (6926) **L N G**
- pg 13 BTEC Introductory Certificate in Engineering Welding/Electrical Installation **N**
- pg 14 BTEC First Diploma in Construction **L G**
- pg 15 BTEC Introductory Diploma in Health & Social Care **G**
- pg 16 BTEC Introductory Certificate in Engineering – Machined Products **N**
- pg 17 CACHE Foundation Course in Childcare **L N G**

L Lincoln **N** Newark **G** Gainsborough



City & Guilds Level 1 Introductory Certificate in Basic Construction Skills (6217-01)

Awarding Body: City & Guilds
Equivalent Value: 4 GCSEs grades D-G

WHAT WILL I STUDY?

The course is made up of 8 units:

- Applying emulsion to wall by roller
- Painting doors and frames
- Rust removal and priming metal
- Constructing a panelled door
- Constructing half-brick wall in stretcher bond
- Constructing one-brick wall in English bond
- Constructing a detached hollow pier
- Constructing through mortice and tenon
- Constructing hunched mortice and tenon

WHAT SKILLS/QUALITIES ARE REQUIRED?

- An interest in construction
- Good practical abilities and organisational skills
- A suitable SATs score for this level of qualification

HOW WILL I LEARN?

- Through a combination of theory and practical lessons

HOW WILL I BE ASSESSED?

- Learners must complete all 8 units

HOW LONG WILL IT TAKE?

- The programme duration is for two years, based at Lincoln, Gainsborough & Newark College on a part-time release basis through your school

WHERE WILL IT LEAD?

- Acceptance on a full time course at college or a career in the Construction Industry
- An Apprenticeship within Construction
- Gain employment in the Construction Industry.





Certificate in Vehicle Maintenance and Repair 4101

Awarding Body: City & Guilds (Level 1)
Equivalent Value: 5 GCSEs grades D - G

WHAT WILL I STUDY?

- Developing self and working safely with others
- Removing and Replacing components
- Vehicle Service and Repair

WHAT SKILLS/QUALITIES ARE REQUIRED?

- Good practical abilities
- An interest in motor vehicles
- A need to learn through workshop and classroom practices
- A suitable SATs score for this level of qualification

HOW WILL I LEARN?

- Through a combination of practical tasks and theory lessons

HOW WILL I BE ASSESSED?

- Practical observation completed by an assessor in written format and theory tests conducted by online multi-choice tests

HOW LONG WILL IT TAKE?

- The programme duration is for two years, at Lincoln, Gainsborough & Newark College on a part-time release basis through your school

WHERE COULD IT LEAD?

- Programme Award Level 2
- Programme Award Level 3
- Work Based Learning
- Employment in the Motor Vehicle industry eg garage/ car sales

ADDITIONAL REQUIREMENTS

- You need to enjoy working with your hands and have a desire to learn more about motor vehicles.

Certificate in Hospitality and Catering Skills

Awarding Body: ABC (Level 1)

Equivalent Value: 2 GCSEs grades D-E

WHAT WILL I LEARN?

You will learn about:

- Hygiene, Health and Safety
- Customer care and hospitality
- Food preparation – kitchen, larder, pastry and baking
- Catering and menu costing
- Food and drink service
- Promoting catering products and services

WHAT SKILLS/QUALITIES ARE REQUIRED?

- Ability to work as part of a team
- Good practical abilities
- Good communication skills

HOW WILL I LEARN?

- Through a combination of theory and practical (kitchen and restaurant based) lessons

HOW WILL I BE ASSESSED?

- You will produce a portfolio of evidence
- You will carry out various tasks in the kitchen or restaurant to show your practical skills

HOW LONG WILL IT TAKE?

- You will attend Lincoln College for 2 half days a week for 2 years

WHERE WILL IT LEAD?

- NVQ Food Preparation and Service at College
- Apprenticeship in food production or food service linked to a local employer.





Certificate in Skills for Working Life

Awarding Body: College Certificate

WHAT WILL I LEARN?

- Students will have various options to choose from eg Bricklaying, Painting and Decorating, Health and Social Care, Theatre Studies, Introduction to Food Preparation Horticulture, Horsecare, Art & Crafts, Personal Care or Metal Craft
- Health and Safety
- How to develop a task
- Team working
- Industry and occupation awareness
- Skills linked to the vocational area

WHAT SKILLS/QUALITIES ARE REQUIRED?

- An interest in a vocational area
- Ability to follow instructions
- Willingness to try different tasks
- Ability to cope with the college environment

HOW WILL I LEARN?

- Learning will be through practical activities
- Theory work will underpin the practical activities

HOW WILL I BE ASSESSED?

- Students will be observed during practical sessions
- Oral questioning
- Group and individual tasks / assignments

HOW LONG WILL IT TAKE?

- The programme duration is for 2 years at Lincoln, Newark & Gainsborough College on a part time basis through your school
- 3 options per year negotiated by schools

WHERE WILL IT LEAD?

- A full time Entry Level course at college
- Knowledge of a vocational area
- Work based training.

Certificate in Salon Services (6926)

Awarding Body: City & Guilds

Equivalent Value: 2 GCSEs grades D - G

WHAT WILL I LEARN?

- Health and Safety
- Salon reception duties
- Customer service
- Personal presentation
- Make-up and manicure skills
- Hairdressing services
- Industry and occupation awareness

WHAT SKILLS/QUALITIES ARE REQUIRED?

- An interest in Beauty Therapy and Hairdressing practices
- Good communication skills
- Ability to work as part of a team
- Personal presentation to be of a high standard
- Good hygiene procedures

HOW WILL I LEARN?

- Learning will take place within a salon environment, using practical skills to assist therapists and stylists
- Theory work will include assignments, tasks and case studies

HOW WILL I BE ASSESSED?

- Students will be observed performing various practical treatments in the Beauty Therapy and Hairdressing Salon
- Knowledge and understanding of the industry will be assessed through written assignments, case studies and oral questioning
- A multiple-choice test covering the knowledge base across all units

HOW LONG WILL IT TAKE?

- The programme duration is for two years at Lincoln, Newark & Gainsborough College on a part-time release basis through your school.

WHERE WILL IT LEAD?

- A full time course at college
- A career in the Hairdressing and Beauty Therapy Industry
- An Apprenticeship - Work Based Learning in the Hairdressing or Beauty Therapy Industry.





BTEC Introductory Certificate in Engineering Welding/Electrical Installation

Awarding Body: Edexcel
Equivalent value: 2 GCSEs D - G

WHAT WILL I STUDY?

- Investigating Health and Safety in the engineering industry
- Joining materials by Manual Metal Arc/Metal Arc Gas shielded welding
- Assembling and testing electrical circuits
- Interpreting engineering drawings

WHAT SKILLS/QUALITIES ARE REQUIRED?

- Good practical abilities
- An interest in engineering
- Good organisational skills
- Suitable SATs score for this level of qualification

HOW WILL I LEARN?

- Through a combination of theory and practical lessons

HOW WILL I BE ASSESSED?

- Continual assessment with the programme
- Finished product assessment
- Written question/answer

HOW LONG WILL IT TAKE?

The programme duration is 2 years, based at Newark College

WHERE WILL IT LEAD?

Further study at level 2

- Full-time course at the college or a career in the engineering industry
- An Apprenticeship in engineering
- Gain employment in the engineering industry.

YOUNG APPRENTICESHIPS

BTEC First Diploma in Construction Level 2

Awarding Body: Edexcel

Equivalent Grades: 4 GCSEs grades A* - C

All young people who participate will:

- Pursue an approved vocational qualification at Level 2
- Have an appropriate and extended experience of work with an employer
- Have their extended work experience and their coursework contributing directly to the qualification
- Prepare for and be offered clear progression route

How the programme has developed:

Cohort 1 – started September 2004 and completed in July 2006 with approximately 1000 pupils nationally

Cohort 2 – started September 2005 and completed July 2007 with approximately 2000 pupils nationally

Cohort 3 – started September 2006 and completes July 2008 with approximately 3500 pupils nationally

This programme may not be available in its present form for a fourth Cohort. However, a new Specialised Diploma may be available as an alternative.





BTEC Introductory Diploma in Health & Social Care

Awarding Body: BTEC

Equivalent value: 2 GCSEs D - G

WHAT WILL I STUDY?

- Starting work in Health & Social Care
- Developing Skills in Health & Social Care
- Personal effectiveness
- Social responsibility at work
- Financial management

WHAT SKILLS/QUALITIES ARE REQUIRED?

- A genuine interest in caring
- Evidence of working with people
- Good communication skills

HOW WILL I LEARN?

- Through theory lessons visits, visiting speakers, peer support and practical application

HOW WILL I BE ASSESSED?

- Units are continually assessed within the programme

HOW LONG WILL IT TAKE?

The programme duration is 2 years based at Gainsborough College

WHERE WILL IT LEAD?

Further study at level 2 in Health & Social Care or Childcare.

BTEC Introductory Certificate in Engineering – Machined Products

Awarding Body: Edexcel

Equivalent value: 2 GCSE grades D - G

WHAT WILL I STUDY?

- Investigating Health and Safety to the engineering industry
- Machining a product
- Interpreting engineering drawings

WHAT SKILLS/QUALITIES ARE REQUIRED?

- Good practical abilities
- An interest in engineering
- Good organisational skills
- Suitable SATS score for this level of qualification

HOW WILL I LEARN?

- Through a combination of theory and practical lessons

HOW WILL I BE ASSESSED?

- Continual assessment within the programme
- Finished product assessment
- Written question/answer

HOW LONG WILL IT TAKE?

The programme duration is 2 years based at Newark College

WHERE WILL IT LEAD?

Further study at level 2

- Full-time course at the college or a career in the engineering industry
- An Apprenticeship in engineering
- Gain employment in the engineering industry.





CACHE Foundation Course in Childcare

Awarding Body: CACHE

Equivalent value: 3GCSE's at grade D-G

WHAT WILL I STUDY?

- Hygiene, Health and Safety
- Human growth and development
- Diet and Nutrition for all ages
- Play activities for children
- How to care for children
- Work skills for a child care environment

WHAT SKILLS/QUALITIES ARE REQUIRED?

- Ability to work as part of a team
- Good practical abilities and an enthusiasm for practical tasks
- Good communication skills
- You may need to have a Criminal Records Bureau check

HOW WILL I LEARN?

- Through a combination of theory and practical lessons (these can be very messy!!)

HOW WILL I BE ASSESSED?

- You will produce a portfolio of evidence and will also complete an online multiple choice test

HOW LONG WILL IT TAKE?

- You will attend college for one four hour session per week for two years

WHERE WILL IT LEAD?

- Level 2 Certificate in Childcare
- Level 2 Apprenticeship in childcare



KS4 ENHANCED CURRICULUM Application



Please tick where appropriate

First Name:		Surname:																																						
Date of Birth:		Male:	Female:																																					
Address:																																								
Post Code:		Telephone No:																																						
Name of Parent/ Guardian:		Emergency Contact Tel No:																																						
Name of the School you are attending:																																								
Which College course(s) are you interested in?	First Choice	Second Choice																																						
Which College have you chosen?	Lincoln <input type="checkbox"/>	Newark <input type="checkbox"/>	Gainsborough <input type="checkbox"/>																																					
What career, if any, do you have in mind?																																								
Do you have any medical or learning needs we should know about?	Yes:	No:																																						
If yes, please give a brief description:																																								
Please tell us about yourself and your interests:																																								
Clothing Measurements: (Circle as appropriate)	<table style="width: 100%; border: none;"> <tr> <td style="width: 25%;">Height in feet & inches:</td> <td colspan="4">Shoe size:</td> </tr> <tr> <td>Male</td> <td>Small</td> <td>Medium</td> <td>Large</td> <td>Extra Large</td> </tr> <tr> <td>Chest size:</td> <td>34"</td> <td>36"</td> <td>38"</td> <td>40"+</td> </tr> <tr> <td>Waist size:</td> <td>26"</td> <td>28"</td> <td>30"</td> <td>32"</td> <td>34"</td> <td>36"</td> <td>38"</td> <td>40"</td> <td>42"</td> </tr> <tr> <td colspan="5">Female</td> </tr> <tr> <td>Dress size:</td> <td>8</td> <td>10</td> <td>12</td> <td>14</td> <td>16</td> <td>18</td> </tr> </table>			Height in feet & inches:	Shoe size:				Male	Small	Medium	Large	Extra Large	Chest size:	34"	36"	38"	40"+	Waist size:	26"	28"	30"	32"	34"	36"	38"	40"	42"	Female					Dress size:	8	10	12	14	16	18
Height in feet & inches:	Shoe size:																																							
Male	Small	Medium	Large	Extra Large																																				
Chest size:	34"	36"	38"	40"+																																				
Waist size:	26"	28"	30"	32"	34"	36"	38"	40"	42"																															
Female																																								
Dress size:	8	10	12	14	16	18																																		

Data Protection Act 1998

I understand that the information provided on this application form will be held by Lincoln College and shared with other organisations for administration, careers, guidance, statistical and research purposes. In addition Key Stage 4 learners may be involved in the making of promotional materials for educational purposes, eg taking part in the making of a DVD or photographs.

Parent/Guardian Signature.....

*FOR SCHOOL USE ONLY

It is important that we get the match between young people, their interests and the course levels right. To help us do this, we require all of the following information prior to interview:

Unique Pupil Number	Predicted SATS Results		
	MATHS	ENGLISH	SCIENCE

TARGET GCSE GRADES		
MATHS	ENGLISH	SCIENCE

SEN Information

Learning:

Behaviour:

Attendance

--

Medical Check

Known conditions and medication taken:
--

Teacher's Comments

Writing Age:

Reading Age:

Ability to work independently:

Relationship with peer group:

If a student has a Statement then you must attach a copy of it with this application form.

Attended taster Y/N _____ School Informed Y/N _____ Attended Interview Y/N _____

Place offered Y/N _____ Confirmation letter sent Y/N _____

Signature: Date:

OUR MISSION

“Raising Aspirations, Realising Potential, Delivering Success.”

OUR VALUES

As both an employer and learning provider our values are to:

- Achieve the highest of standards and continuously improve in all our activities
- Always be honest, fair, transparent and open in all our operations
- Support all individuals to reach their full potential
- Be innovative and responsive in seeking out opportunities to expand and promote the college
- Actively involve students in the life and work of the college
- Value diversity and promote equality of opportunity.

OUR OBJECTIVES AND VISION

Lincoln College strives to:

- Increase and widen participation in all college locations
- Be recognised as a fair employer which develops the potential of all its staff
- Ensure all learning opportunities are of outstanding quality accompanied by a first class support service
- Accommodate learners and staff in the highest quality accommodation accessible to all client groups
- Lead and work in partnership to create a learning environment which contributes to social inclusion, economic regeneration and contributes to the workforce development of the region
- Be an environmentally responsible organisation.

The Disability Discrimination Act

The College wishes to ensure that it complies with the requirements of the DDA (as amended by the Special Education Needs and Disability Act 2001). If you are a disabled person, please ensure that we know what you need in order that we can make reasonable adjustments to help you succeed.

Criminal Records Bureau policy

Some programmes require a number of hours on work placement in order to achieve the full qualification. Candidates working with all client groups, whether children, the elderly or people with a disability will need to complete a Criminal Records Bureau check before they can go into the work setting.

Candidates must be aware that if they have received a caution, reprimand or conviction it will prohibit them from enrolling on a programme of study. If you enrol on one of these courses before Lincoln College has received your CRB clearance, and the CRB check is not clear, the college will withdraw you from the programme.

EQUAL OPPORTUNITIES

Lincoln College is committed to the active promotion of equality of opportunity for all and opposes unlawful or unfair discrimination of any kind.

The College aims to enable its students and staff to maximise their individual potential through the promotion and implementation of equality of opportunity measures.

The College seeks to employ a workforce and maintain a student body which reflects the diverse community it serves, because it values the individual contributions of all people.

The College seeks to promote equality of opportunity within employers and other organisations who provide work experience and work placement for students and trainees.

The College recognises that certain physical, personal, institutional and cultural barriers exist which should be reduced or eliminated.

Disclaimer

The information given in this publication is intended as a general guide. Lincoln College reserves the right to vary or modify the course, fees and programmes on offer in this publication according to available resources and without prior notice. All information contained in this publication was correct at time of printing.

Lincoln College provides specialist advice and resources to improve access for students with learning difficulties and/or disabilities to curriculum areas, to study skills support and to college services. Qualified and experienced staff deliver classroom support, one-to-one tuition, communications support and assessments.

We will make all reasonable adjustments to avoid substantial disadvantage to any disabled student or other disabled people. College information is available in a range of different formats that help make it accessible to all. If you require this publication in a form that suits your needs please ring 01522 876220.

Lincoln College



KEY

- | | | | |
|---|------------------------|----|-----------------------------|
| 1 | Main Reception | 7 | Cathedral Building |
| 2 | Monks Building | 8 | Temple Building |
| 3 | Deans Building | 9 | Gibney Building |
| 4 | Bishops Building | 10 | Sessions House |
| 5 | Friary Learning Centre | 11 | Knights Building |
| 6 | Abbey Building | 12 | Business Development Centre |



Lincoln College
Monks Road
Lincoln LN2 5HQ
Tel: 01522 876000
Fax: 01522 876200
www.lincolncollege.ac.uk



From Northbound A1

Leave the A1 to join the A46 towards Lincoln.
Continue on the A46 until the Carholme roundabout junction with the A57.
Turn right at roundabout onto A57 (Carholme Road) towards Central Lincoln.

From Southbound A1

Leave the A1 at the 'Markham Moor Services' roundabout to join the A57 towards Lincoln.
Remain on the A57 to the Carholme roundabout junction with the A46.
Take second exit onto A57 (Carholme Road) towards Central Lincoln.

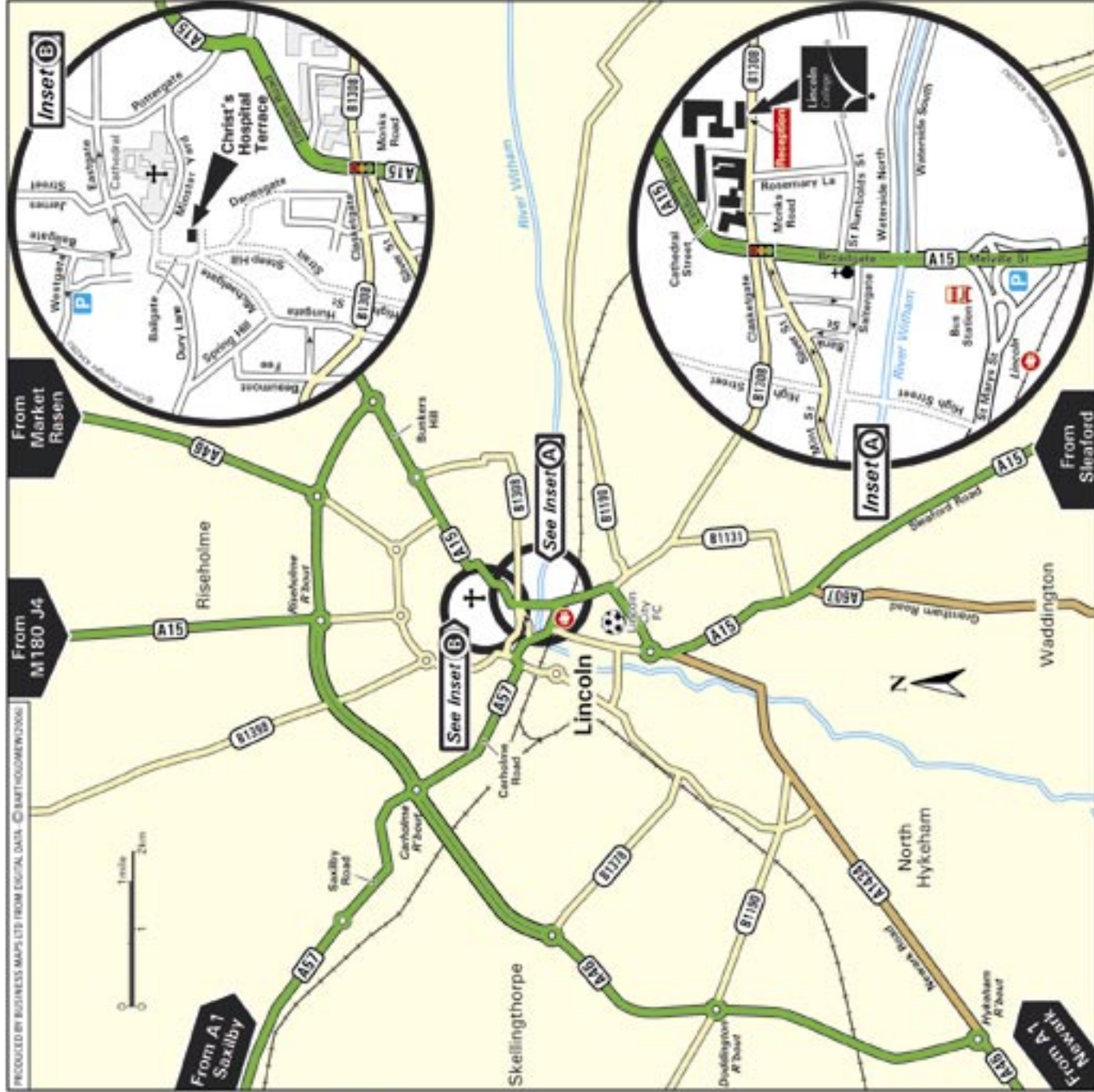
At the end of Carholme Road, go left and get in the middle lane to follow the road round to Mint Street. (B1003).
Continue onto Silver Street, which is a one way street.
At the traffic lights that intersect with the B1308 and the A15 (Broadgate) get into the middle lane and go straight on into Monks Road (B1308).
The College is located on the left hand side (see inset).

From A15 (Sleaford Road)

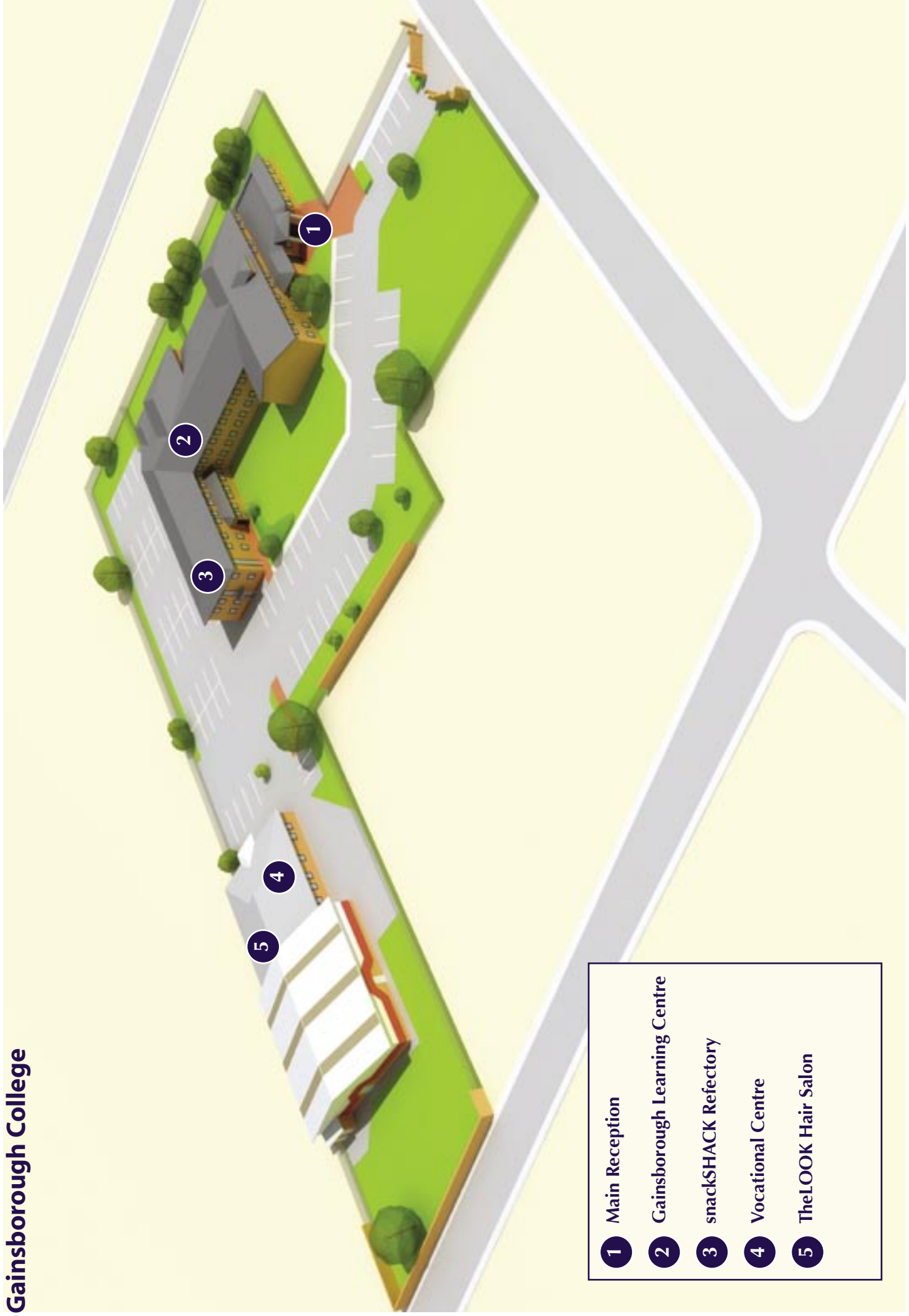
Follow A15 into Lincoln, passing Lincoln City FC.
Continue on the A15 passing the bus station on your left, then turn left into Saltgate, continue onto Silver Street, which is a one way street.
At the traffic lights that intersect with the B1308 and the A15 (Broadgate) get into the middle lane and go straight on into Monks Road (B1308).
The College is located on the left hand side (see inset).

By Train

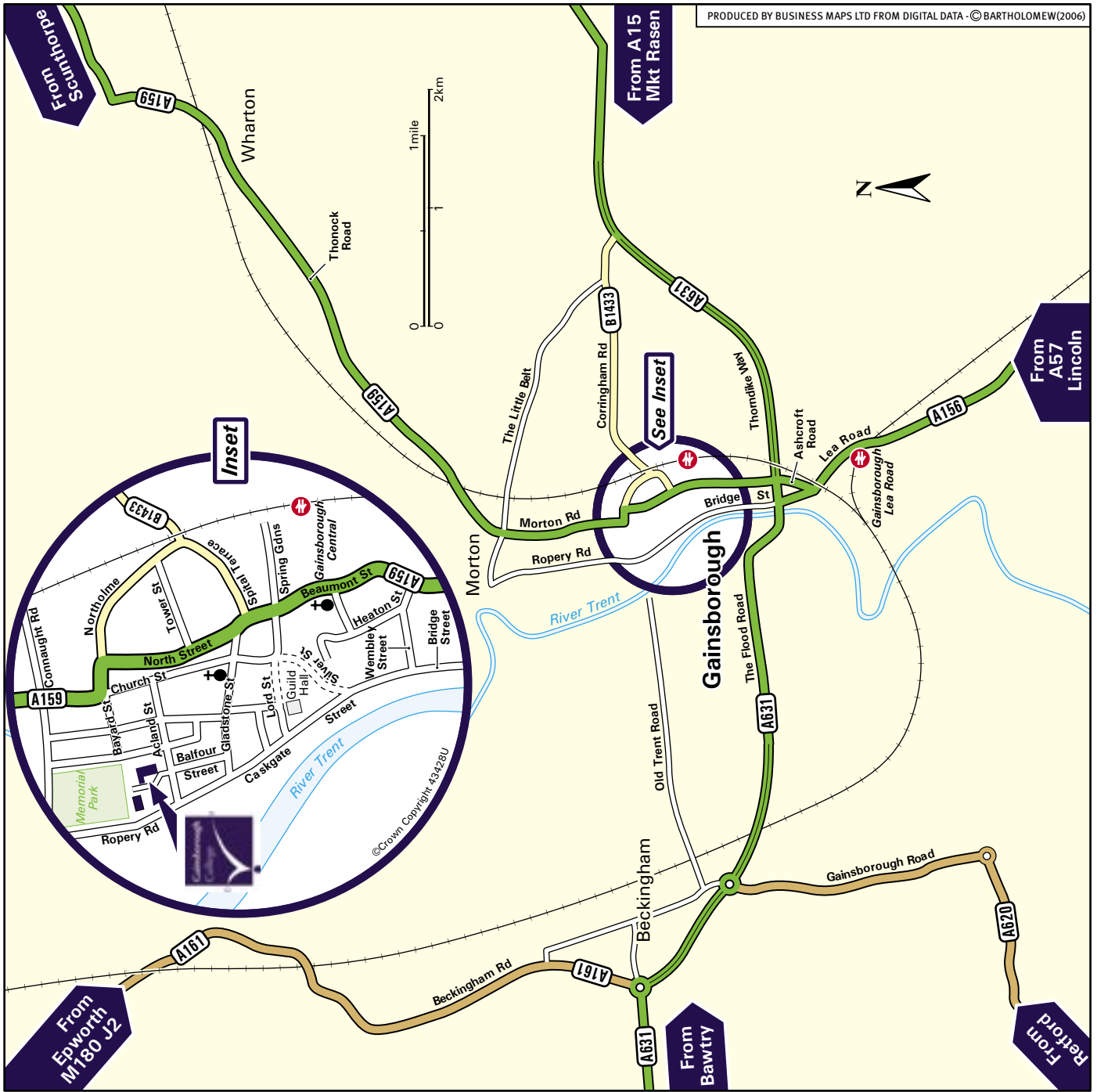
Lincoln receives services from Sheffield, Worksop, Retford, Nottingham, Leicester, Loughborough, Peterborough, Spalding and Newark.
The College is a short walk from the station.



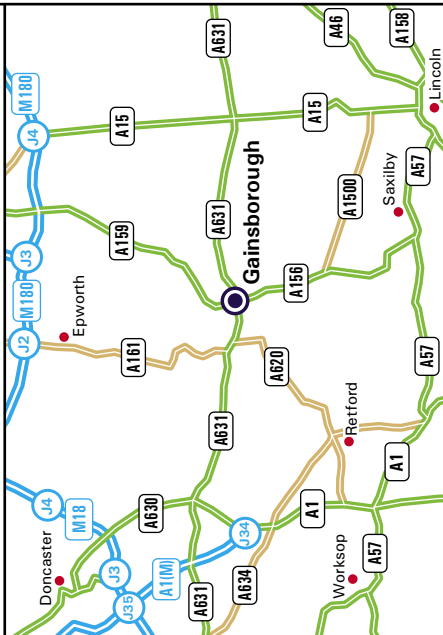
Gainsborough College



- 1 Main Reception
- 2 Gainsborough Learning Centre
- 3 snackSHACK Refectory
- 4 Vocational Centre
- 5 TheLOOK Hair Salon



Gainsborough College
 Acland Street
 Gainsborough DN21 2SU
 Tel: 01427 617471
 Fax: 01427 617577
www.lincolncollege.ac.uk

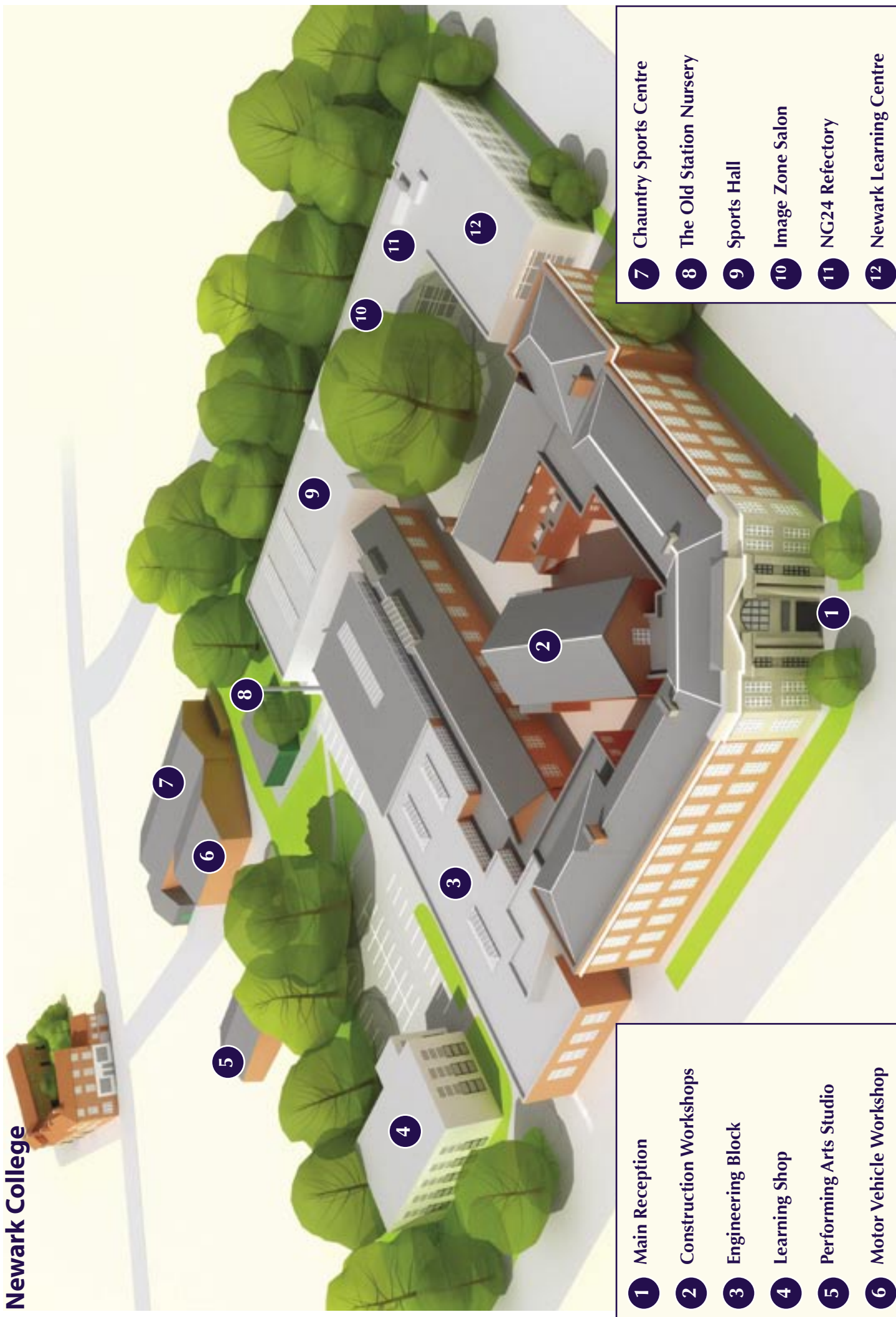


From Lincoln
 Leave Lincoln via the A57.
 Continue for 6 miles, passing Saxilby until the junction with the A156.
 Join the A156 following signs for Gainsborough.
 Remain on the A156 for 11 miles, until the traffic light junction with the A631.
 Continue straight on at the lights onto Bridge Street.
 Continue for 0.5 miles and turn right at the junction with Acland Street.
 The College is located on the left hand side (see inset).

From M180
 Leave the M180 at Junction 2 (signed Goole, Epworth, Crowle & A161).
 Join the A161 following signs for Epworth.
 Remain on the A161 for 13 miles until the roundabout junction with the A631.
 Take the second exit at the roundabout onto the A631, following signs for Gainsborough.
 Continue on the A631 for 3 miles until the traffic light junction with the A156.
 Turn left at the lights onto Bridge Street.
 Continue for 0.5 miles and turn right at the junction with Acland Street.
 The College is located on the left hand side (see inset).

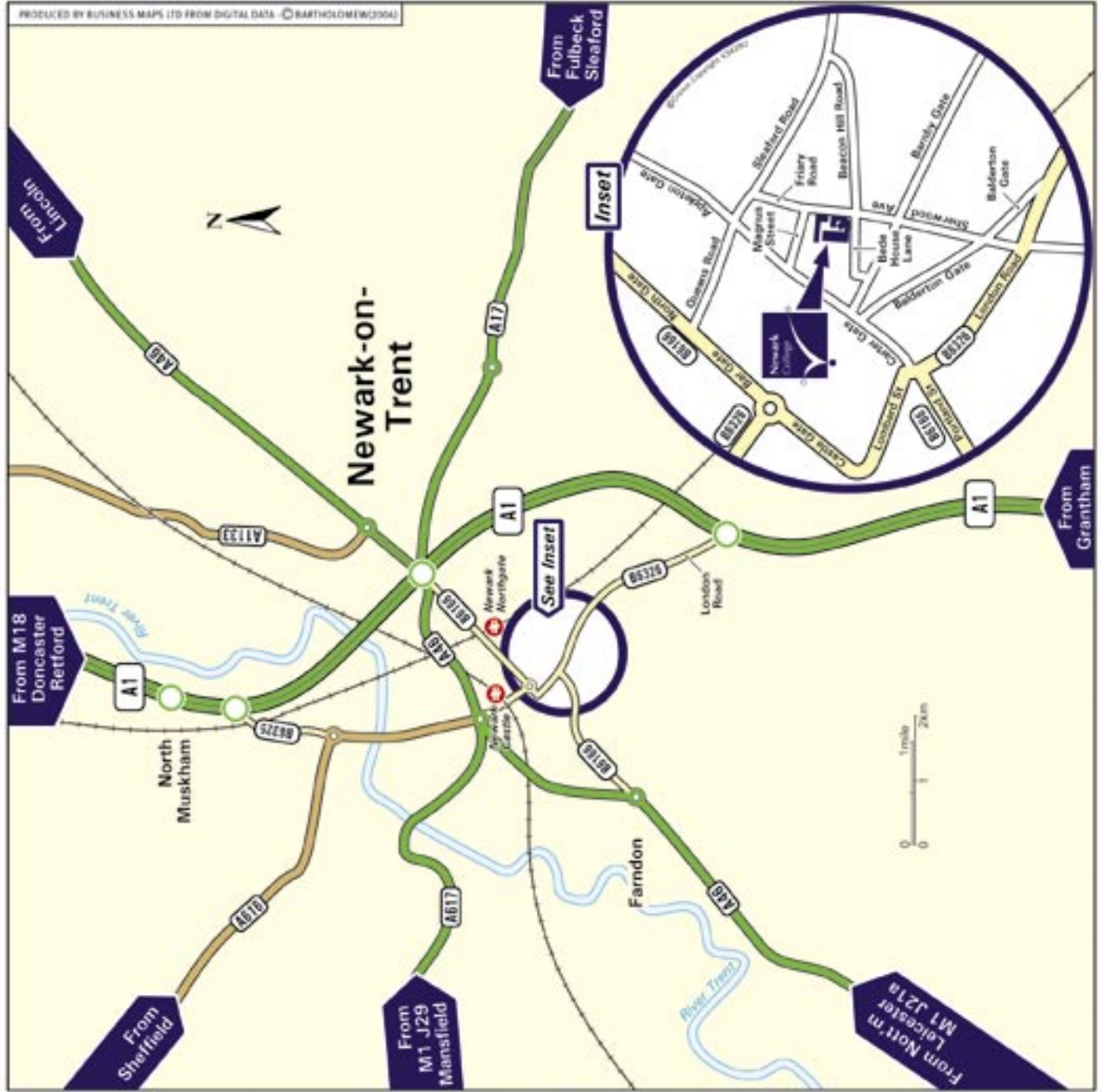
By Train
 Gainsborough Lea Road is the major station in Gainsborough and receives services from Lincoln, Retford, Worksop Sheffield and Doncaster.

Newark College



- 1 Main Reception
- 2 Construction Workshops
- 3 Engineering Block
- 4 Learning Shop
- 5 Performing Arts Studio
- 6 Motor Vehicle Workshop

- 7 Chauntry Sports Centre
- 8 The Old Station Nursery
- 9 Sports Hall
- 10 Image Zone Salon
- 11 NG24 Refectory
- 12 Newark Learning Centre



Newark College
 Friary Road
 Newark NG24 1PB
 Tel: 01636 680680
 Fax: 01636 680681
www.newark.ac.uk



From Northbound A1
 Leave the A1 at the Newark southern exit onto the B6326. Continue on the B6326 (London Road) for 2.1 miles, until the traffic light junction with Sherwood Avenue. Turn right onto Sherwood Avenue. Continue onto Friary Road. The College is located on the left hand side (see inset).

From A1 Southbound
 Leave the A1 at the Newark exit for the A46/A17/B6166. At the roundabout at the end of the slip road, take the first exit onto the A46. Pass over the A1 and at the next roundabout take the first exit onto the B6166. Continue on the B6166 (Lincoln Road) until the traffic light junction with Queens Road. Turn left onto Queens Road. Continue onto Sleaford Road. Turn right onto Friary Road. The College is located on the right hand side (see inset).

By Train
 Newark Northgate station receives services from London King's Cross, Peterborough, Doncaster, Newcastle, Leeds, York and Harrogate. Newark Castle station receives services from Birmingham New Street, Leicester, Nottingham and Lincoln.



Lincoln College
Monks Road
Lincoln
LN2 5HQ
01522 876000

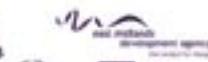
www.lincolncollege.ac.uk



BRITISH COUNCIL



RNIB



UK Skills Partnership



IELTS

EDUCATION
the best you can be

