

Lincoln
College



A LEVEL CENTRES



OfSTED say "The college provides an outstanding environment for learning within which learners achieve very well and feel safe and happy. Care, Guidance and Support are outstanding."

“

Absolutely loved it! I met some great people and amazing friends. Although sometimes there may have been pressure, looking back, the memories are brilliant.

Frances Chapple, who studied Psychology and English Language and is now studying Mental Health Nursing with the University of Nottingham, based at Lincoln County Hospital.

”



“

I had the best two years at college! I met some amazing people. Work was hard at times but the support I got from friends and tutors was great and really kept me going. My college experience has been fantastic and will I miss it.

Antonia Wright, who aims to be a fully qualified nurse and do voluntary nursing in the third world.

”



“

I loved my time at Lincoln College while doing my A Levels. I evolved so much as a person and developed tremendously in relation to my academic skills. My tutors have been incredible they have enabled me to work to the best of my abilities, allowing me to apply to some of the best universities in the country and receive 'A' grades at A Level. My experience at college has enabled me to develop as a person and has allowed me to discover my true self.

Jade Danby, now studying English Language and Literature at University of Sheffield.

”

WELCOME

Welcome to the largest A Level Centre in Lincolnshire, where our focus is success for every student.

Our dedicated staff provide a friendly and supportive environment in which students flourish and are challenged to reach the highest standards.

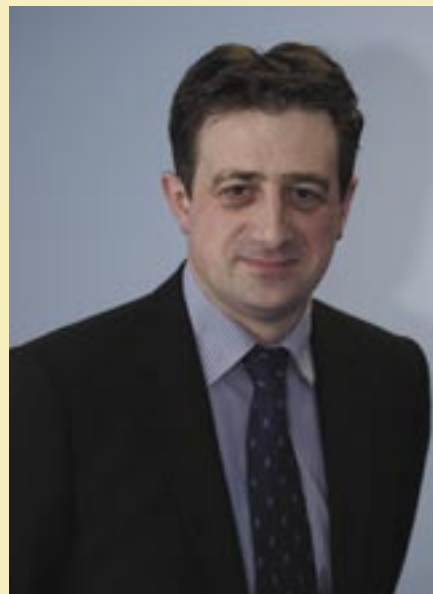
Based in the Abbey Building at the heart of the college's Lincoln Campus, and in the Newark Sixth Centre on the Newark campus, we offer an impressive and welcoming learning environment with high quality classrooms, specialised science laboratories and tutorial suites. We pride ourselves on providing a well-maintained, clean and secure place of study for our students.

We work closely with parents and guardians to ensure students are successful but, as they move through the courses, also help students to develop skills and abilities valued by universities and employers, so they are well prepared for the future:

- independence and confidence
- the ability to think for themselves
- a strong sense of responsibility
- openness and honesty about their progress
- good communication and interpersonal skills

Last year our students achieved a 98% pass rate at A Level. We had our fourth Cambridge University entrant in 2 years and our students have progressed to a range of other universities such as York, Durham, Nottingham, Sheffield & Hull as well as locally to the University of Lincoln and Bishop Grosseteste University College.

We look forward to meeting you in the future. If you would like to know more or have any questions, please contact us by ringing 01522 876313.



Philip Sayles - Director

//



I loved Lincoln College. It was a clean and tidy place and I felt safe – but these are overshadowed by the amazing people who both work and study there. Staff stuck with me through high and low – truly unsung heroes. I would gladly do it all again except I'm on my way to university!

Lauren Butterton, who studied Communications, English Language, Law, Psychology and Sociology A Levels and is now studying BA (Hons) Law at Lincoln University.

//

OUR COURSES



With over 450 students we are able to offer a wide range of A Levels, taught by our large and expert team of tutors.

Most of our students undertake a full programme of three or four A Levels, while some take advantage of the college's broad provision and excellent facilities to combine A Level study with a BTEC vocational course focusing on practical skills. These are available in areas such as Applied Science, Business, Sport, Music and Performing Arts.

A Levels offered:

Art and Design (Fine Art)
Biology
Business Studies
Chemistry
Communication and Culture
Critical Thinking
English Language
English Literature
Further Mathematics
Geography
History
History of Art
Human Biology
Law
Mathematics
Philosophy
Photography
Physics
Psychology
Religious Studies
Sociology
Use of Mathematics

For students who have not studied the right mix of GCSEs or BTECs at school to study the A level subjects of their choice, there is the Level 3 Bridging Programme comprising one AS Level, GCSEs in Maths or Science if required and a qualification to develop research and independent study skills.

For students who narrowly miss our GCSE entry requirements for A levels, our 'Pre-A' (Preparation for A Levels) offers an intensive one-year GCSE retake programme so students can achieve five GCSEs above grade C and then join the A Level programme the following year.

“ My time spent at Lincoln College will remain in my memories as one of the nicest periods of my life so far. I'm now studying at the University of Aberdeen.

Thomas Majchrowski, now studying Chemistry at the University of Aberdeen. **”**



ENTRY POLICY AND INTERVIEWS

We want every student to be outstandingly successful on the courses they join.

To achieve this all students are carefully interviewed by an experienced member of the academic team and we have clear, published 'entry criteria' which must be achieved by the prospective student.

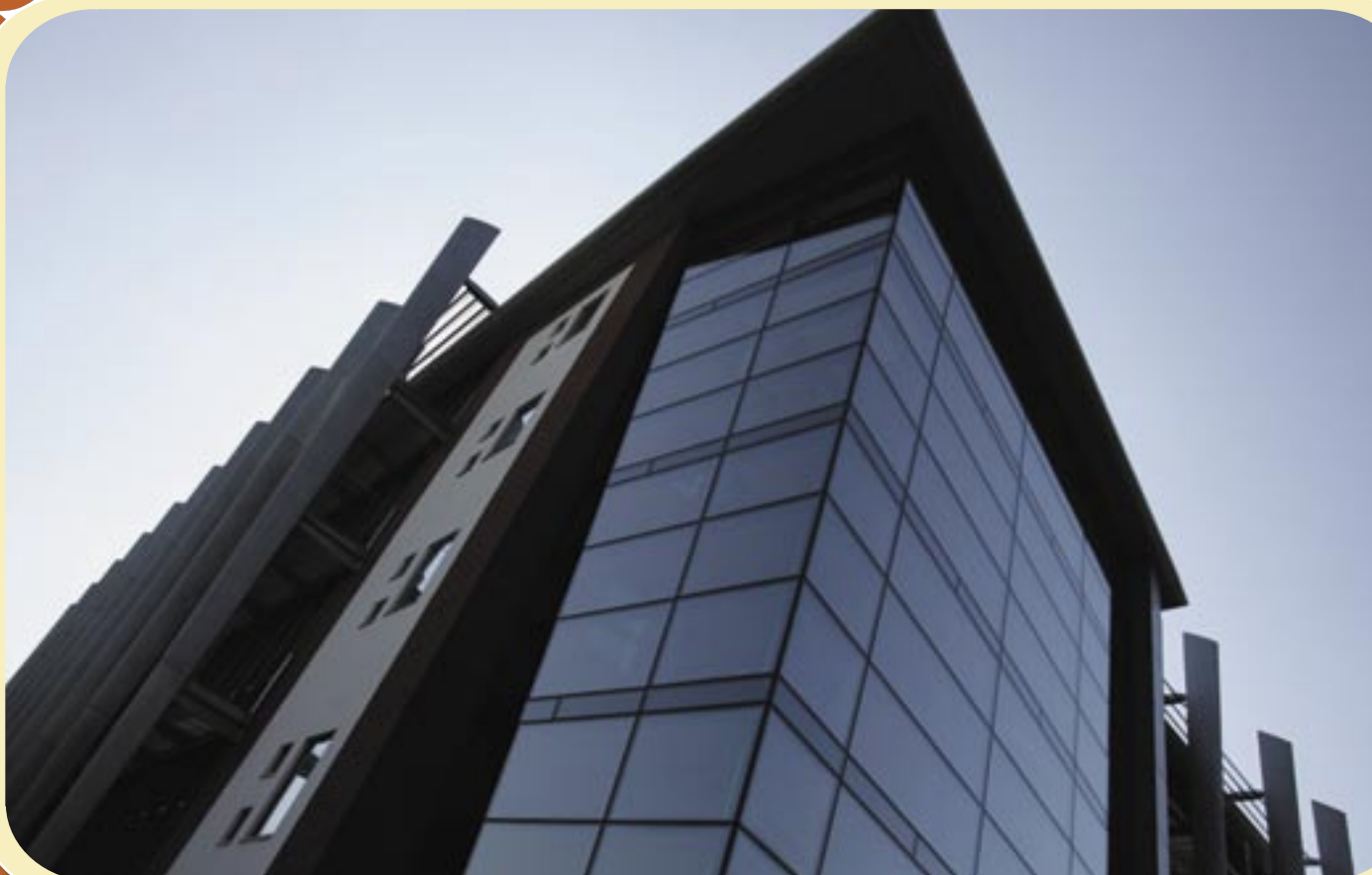
Our entry requirements are set so that when our students join us they are working at the correct level to enable them to pass their course after tuition and support.

How well the student achieves against the entry qualifications will determine how many A levels they can study and, sometimes, which subjects.

Students normally study three or four subjects at AS level (first year of study) plus a tutorial subject.

Students take A2 levels in their second year with us, continuing subjects taken in year one (AS). To continue a subject through to the second year, the student must pass the AS exam for that subject with at least a grade D.

Normally students study three subjects at A2 level, but more are possible for the most able candidates. We are sometimes able to support a student taking a subject at AS and A2 level within the same academic year.



TUTORIAL SYSTEM



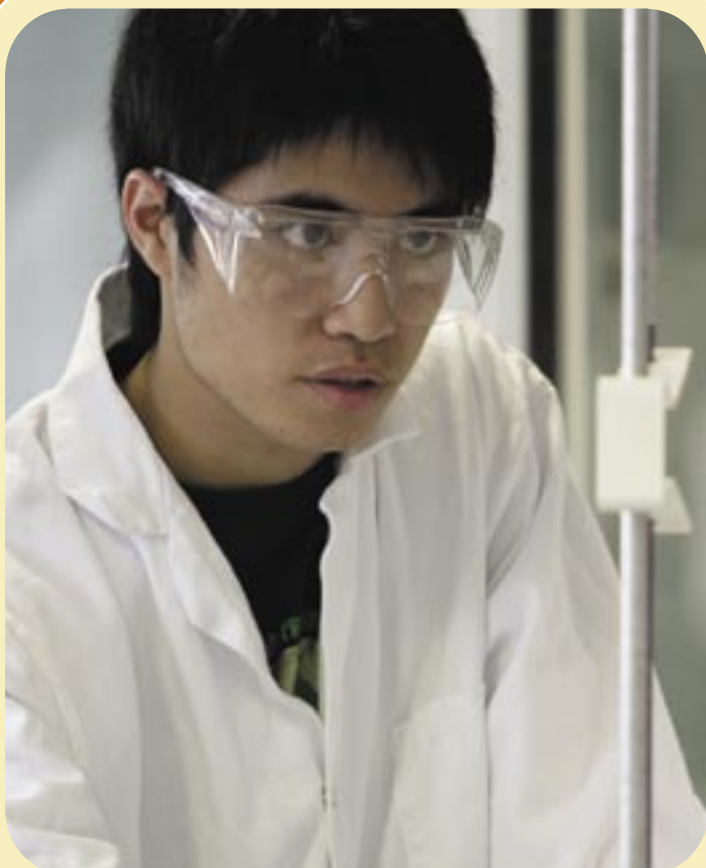
The tutorial system is a very important part of college life for all students.

At the start of the year, each student is allocated a personal tutor, whom they meet regularly on a one-to-one basis. These meetings are used to discuss and monitor the student's progress, set targets and provide an opportunity for the student to raise any concerns he or she might have.

Personal tutors also keep in touch with the student's parents/guardians through parents' evenings or by phone, e-mail and letter when necessary. Reports, containing comments from all the tutors who teach the student, are also available.

A2 level students intending to go on to Higher Education (degree courses at universities or colleges) get advice and support on completing the UCAS application process and the personal tutor will write a thorough, knowledgeable and supportive reference statement.

For all students, we use Pro Monitor - an electronic individual learning plan. This is a record of progress onto which subject tutors, personal tutors and students can enter comments, targets and the results of work. It is an excellent device to allow communication and monitoring of a student's progress, and allows them to take control of their learning and progress.



“

Loved every minute of it! Made me a lot more confident in myself. I found the tutors to be very supportive and I would recommend the college to anyone wanting to continue into further education.

Emily Partridge, who studied Business, Law, Psychology and English Language and is now studying BA (Hons) Business Studies.

”

LEARNING ENVIRONMENT

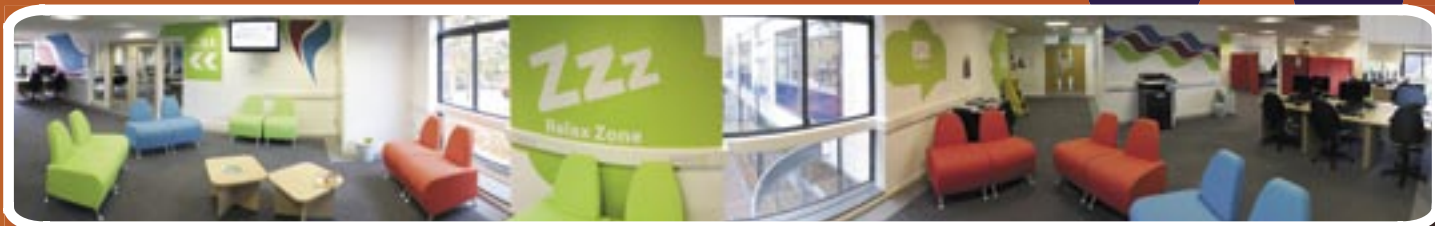
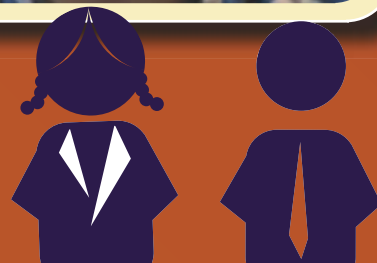
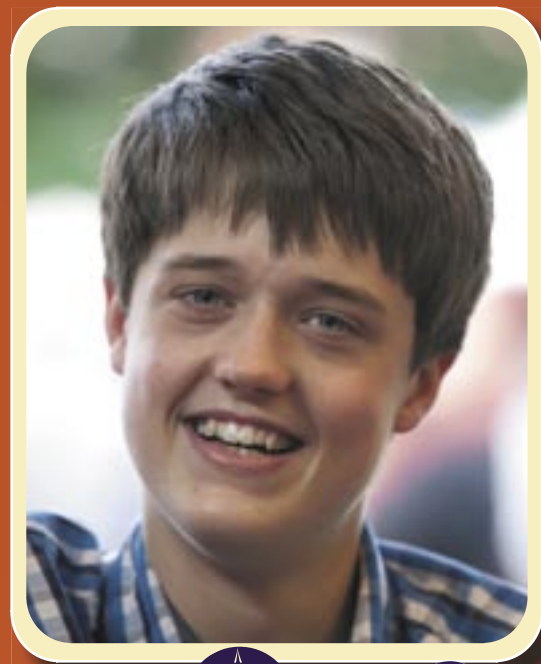
The A Level provision is based in Abbey Building at the heart of the college's Lincoln Campus and in the Newark Sixth Centre in Newark.

In classes, tutors use a wide variety of teaching methods to keep students interested, motivated and challenged. We recognise that different people learn most effectively in different ways (e.g. through writing notes, listening, discussing and balanced classroom tasks). We believe that learning should be enjoyable and that this makes students more prepared to work with us when they have to do the most challenging work and exam preparation.

Information technology aids learning in college and, via broadband links, at home or in other locations. Many resources can be accessed by students online via our 'virtual learning environment' (VLE). These resources include reading lists, class and lecture material, tests and weblinks.

Students can use these resources, along with journals and text books in the college's modern library building facilities. Experienced staff in the Learning Centre provide support to students throughout the day and, during term time, into the evening. There are also 'quiet' areas, which students can simply use to sit and work.

'Blackfriars' restaurant and coffee shop, which is based on the ground floor of Abbey building, offers a wide range of food and snacks and is open from 8.00am through to the early evening, while in Newark NG24 provides restaurant and coffee shop facilities throughout the day.



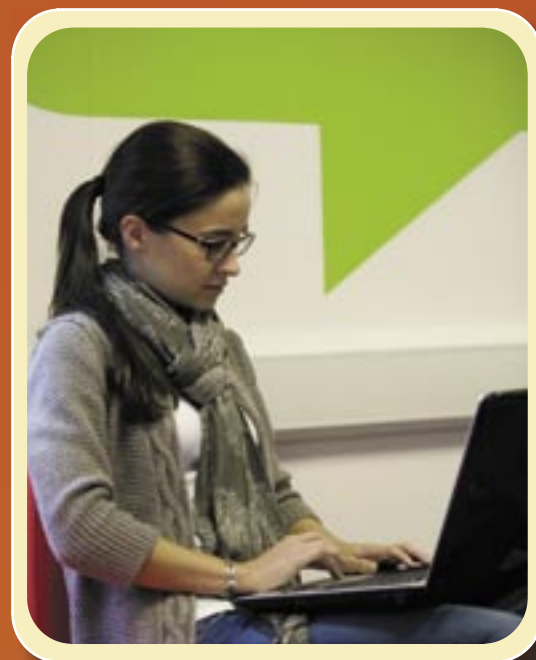
ATTENDANCE AND PUNCTUALITY

We have high expectations of our students and look for the support of parents if problems develop:

We expect students:

- to attend a minimum 95% of lessons with a target of 100%
- to arrive on time and attend every class or meeting with a tutor until it finishes
- to telephone us if they will be late or need to inform us that they are too ill to attend college
- to make personal appointments (e.g. dentist, doctor) outside of class times whenever possible and take holidays outside of term time
- to arrange their part-time jobs so they do not clash with college or consume time needed for study

If a student is persistently late or absent without good cause then we do take disciplinary action against them.



ACADEMIC PROGRESS



The college has a calm and purposeful atmosphere and we deal swiftly and firmly with any rare disruptions to this and to the learning of students.

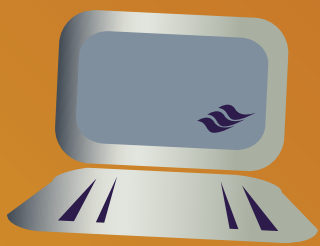
Homework and other tasks are set regularly by tutors, and students are supported to make good progress in class. We expect work to be handed in on time. These things are essential if students are going to maximise their potential and do the best they can in their exams.

If students fall behind with work, the first thing we do is discuss this with them and explore whether further support is needed, or whether there are other factors affecting their performance. Parents are consulted when necessary. After these steps have been taken, and if there are no mitigating factors, we do resort to disciplinary action to get the student to complete the work.

The Disciplinary Policy is clearly set out and available for students to access, and there are various checks and balances to ensure fairness.

We do not tolerate bullying in any form and promote good behaviour via the RESPECT campaign, which has had national recognition and encourages everyone in the college community to respect each other and college property.

The college has a strict Child and Vulnerable Adult Protection Policy and staff are trained in meeting the requirements of legislation for young people under the age of eighteen.



“

I felt everyone was really supportive during my studies and encouraged me to reach my future goal of attending Nottingham Trent University to study BSc (Hons) Forensic Science.

”



RESIDENTIALS, VISITS AND FUN



Activities and educational trips are important parts of our programme, offering extended learning opportunities and the excitement of new experiences.

Recent residential trips have included Art & History of Art students visiting the sights and galleries of Amsterdam and Paris, Geography students undertaking fieldwork in Barcelona, History students visiting Berlin as part of their studies of Germany and students visiting Brussels & Strasbourg to tour the European Parliament.

Psychology and Sociology students attended academic conferences in London, while Communication and Culture students attended an event in York. Law students undertook court visits, and science students conducted a range of fieldwork and industrial visits within UK.

We hold a fantastic Annual Awards Ceremony for our students. In addition, students have the opportunity to organise an End of Year Party and there is a range of activities throughout the year to for them to enjoy, make friends and learn new skills. These have included day trips to Alton Towers, Old Trafford and skiing, charity fund raising and a student magazine.

We also pay close attention to our learners' views and there are opportunities for students to serve on our Student Council, representing their peers and contributing ideas.



STUDENT SERVICES

As well as benefiting from the experience and resources in the Centre, students can draw on the specialist knowledge of the college's Student Services Unit, which has staff expert in personal welfare, health advice and, importantly, in helping students with conditions such as dyslexia, other learning difficulties or disabilities.

Extensive support can be provided, which is often more appropriate than that which students receive at school. Exam concessions can be applied for, specialist equipment provided on loan and students can access a professional counselling team and advice and support for many personal problems.

Care, Guidance and Support was judged to be outstanding by OfSTED. The Student Services Unit also has the prestigious Matrix and Charter Mark awards.

For further information on Student Services please ask any member of staff, contact Student Services direct on 01522 876220 or view the website.



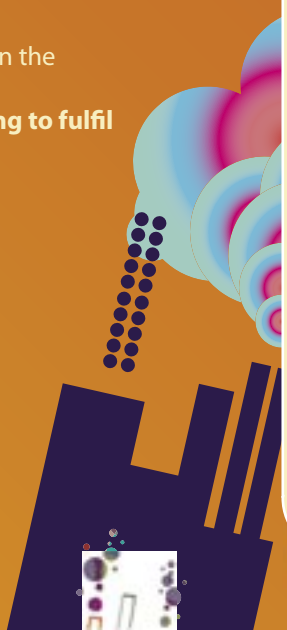
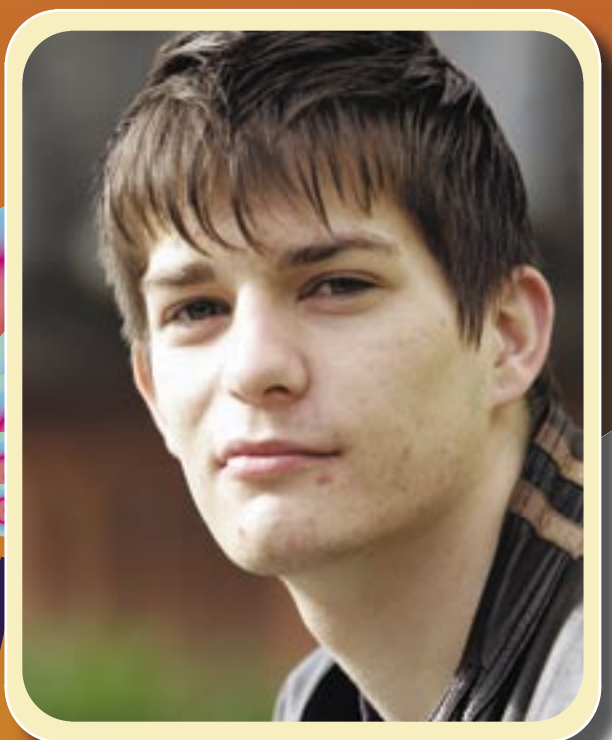
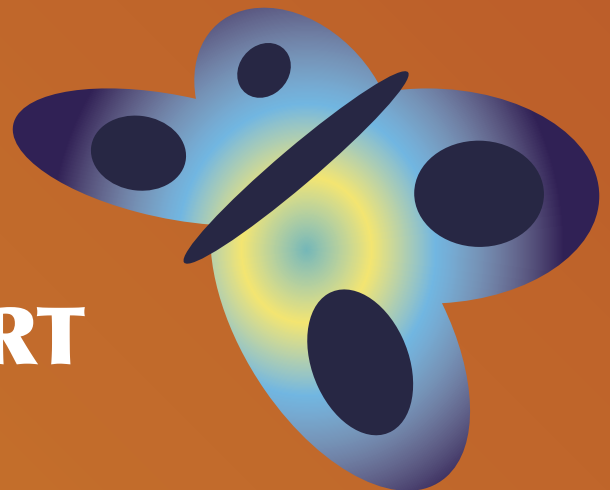
FINANCIAL SUPPORT

As well as supporting learning directly, the Student Services Department is also the contact point for the financial support students can be eligible for at college.

Students can also apply for financial support for educational trips, for help with travel to and from college, and for equipment and books. This government money, known as the Learner Support Fund, is managed by Student Services and is means tested. Students from families who have low incomes or are in receipt of benefits are encouraged to contact Student Services for financial advice.

For further information contact Student Services on the number above or look online.

High attendance is essential if students are going to fulfil their maximum potential.



CASE STUDIES

Xan Downing

Currently studying: AS Levels in History, Geography and Biology.

"Coming to college has given me a second chance," says Xan, who previously started her A Levels at school, but decided she wanted to be in a more adult environment:



"I've been amazed at how different it is to school! It's a much more adult environment and the teaching facilities are excellent."

"Studying Biology means I'm taught in the laboratories and they are fantastic! They're modern, spacious and fully equipped. Most lessons involve lots of practical work, so I really enjoy the 'hands on' nature of this course."

Next year I hope to complete my A Levels before going on to study Archaeology at University.

Jade Lowe

Currently studying: A Levels in Psychology, Sociology and Law.

"I think that deciding to come to college has really helped with moving onto university. It's been like a practice run,"

Jade, who has applied to study Psychology at Nottingham Trent University.

Jade found the support she received when completing her university application valuable:

"I was a bit daunted by the process of applying to university - before coming to college I really didn't know what it would entail."

"Fortunately, we went through the UCAS application process in detail during our tutorials, so we knew what to expect and how to go about completing the process."

"The tutors were really supportive when it came to applying to university, particularly when it came to writing our Personal Statement."

"It can be quite hard to write positive things about yourself, but they took the time to read through our individual applications and advise us."



Rhian Whitehead

Rhian went to The Grove School and is now studying A Levels in Geography, Psychology and Art.

Rhian wanted a new experience from school and that was the deciding factor for her to come to Newark Sixth.



"I have been getting to know new friends and teaching staff and I'm really enjoying it" she said.

"A lot is expected of us but you get to wear what you want and are treated as an adult."

Rhian wants to go to university and study Geography when she leaves college.

Abbie Moore

Abbie attended Tuxford School and is now studying A Levels in Sociology, Psychology and English Language

Abbie chose to come to Newark Sixth after seeing the newly revamped centre and has not regretted her decision.

"I think it's brilliant here, there are lots of computers and it's just really nice" she said.

"At school you are seen as that year 7 kid who grew up there, but here you are treated as an adult."

Once Abbie has completed her A Levels, she hopes to go on to become a Primary School Teacher.



“
Lincoln College was the best two years of my life. I still had all my old friends from school and brand new ones. The environment was calm and friendly. The work was challenging, but concentration and determination see you through. I am now training to be an officer in the RAF and the qualifications I studied at college have become very useful. Life is good.”

“
College is a way of helping you with life at Uni as the self-discipline can be a huge factor for people to deal with and the college seems to set you up for this mindset. I'm now studying at Leicester University on an LLB (Law) degree.”

“
The college is a very relaxed and warm environment with immaculate buildings and great facilities. The teachers and every student were passionate about education. I'm now studying a Foundation Diploma in Art and Design.”

“
Going to college from school is one of the best decisions I made. I am more independent than when I started, more confident and more sociable – this personal development would make me recommend college to anyone.”

**A Level Centre | Lincoln College | Monks Road | Lincoln | LN2 5HQ
01522 876313 | www.lincolncollege.ac.uk**

**Newark Sixth | Newark College | Friary Road | Newark | NG24 1PB
01636 652150 | www.newarksixth.co.uk**

enquiries@lincolncollege.ac.uk | www.facebook.com/lincolncollege

